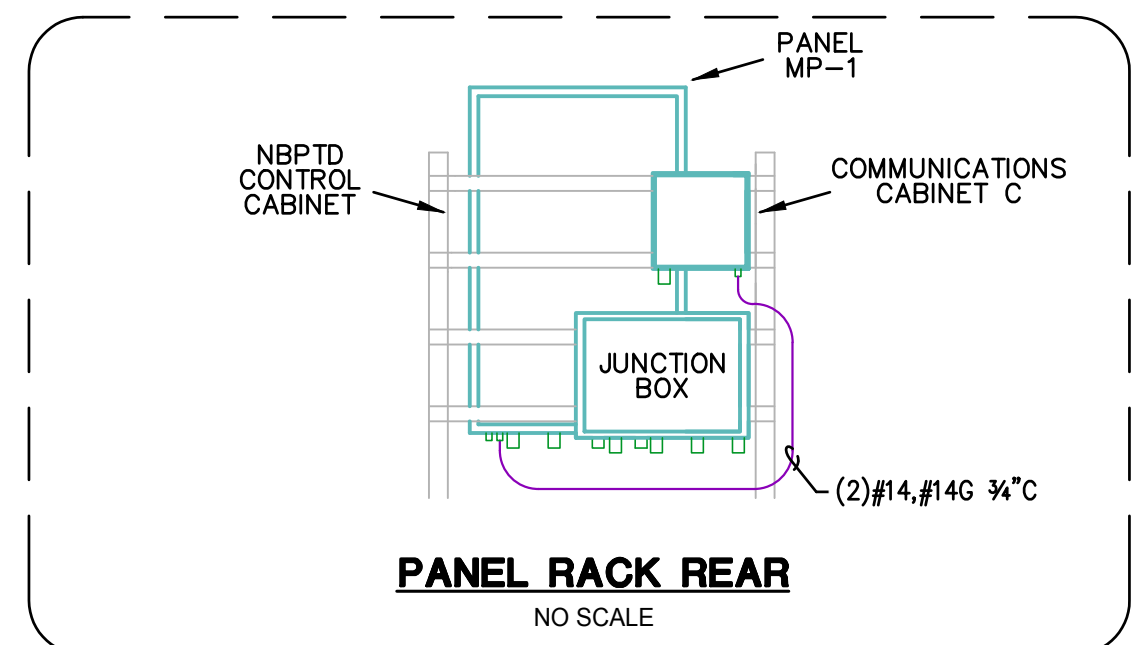


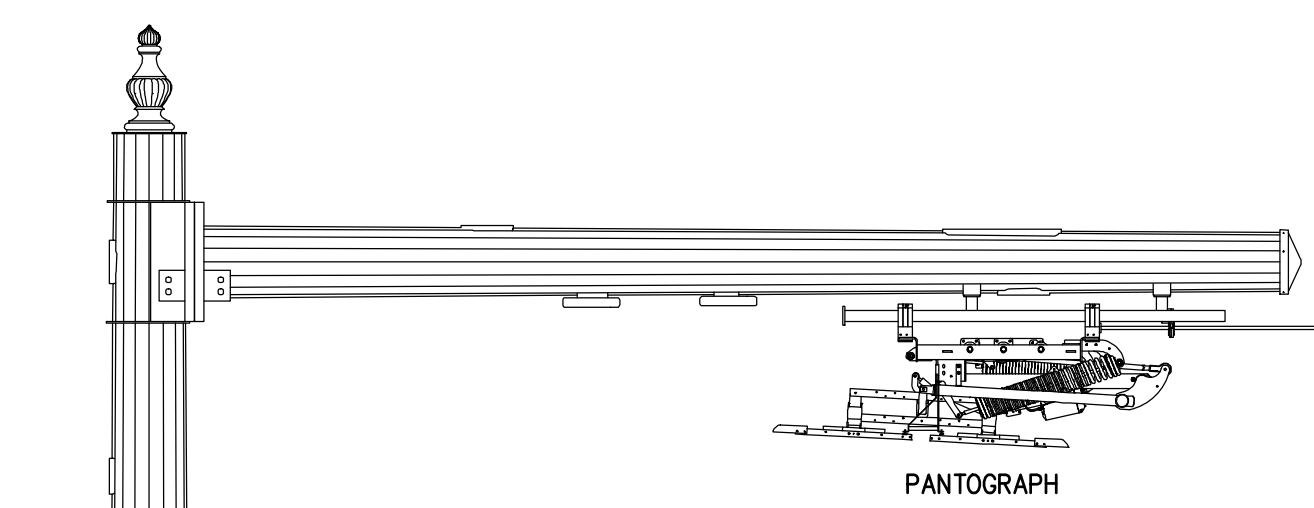
ELECTRICAL SITE PLAN
 SCALE: 1" = 10'-0"

ELECTRICAL NOTES:

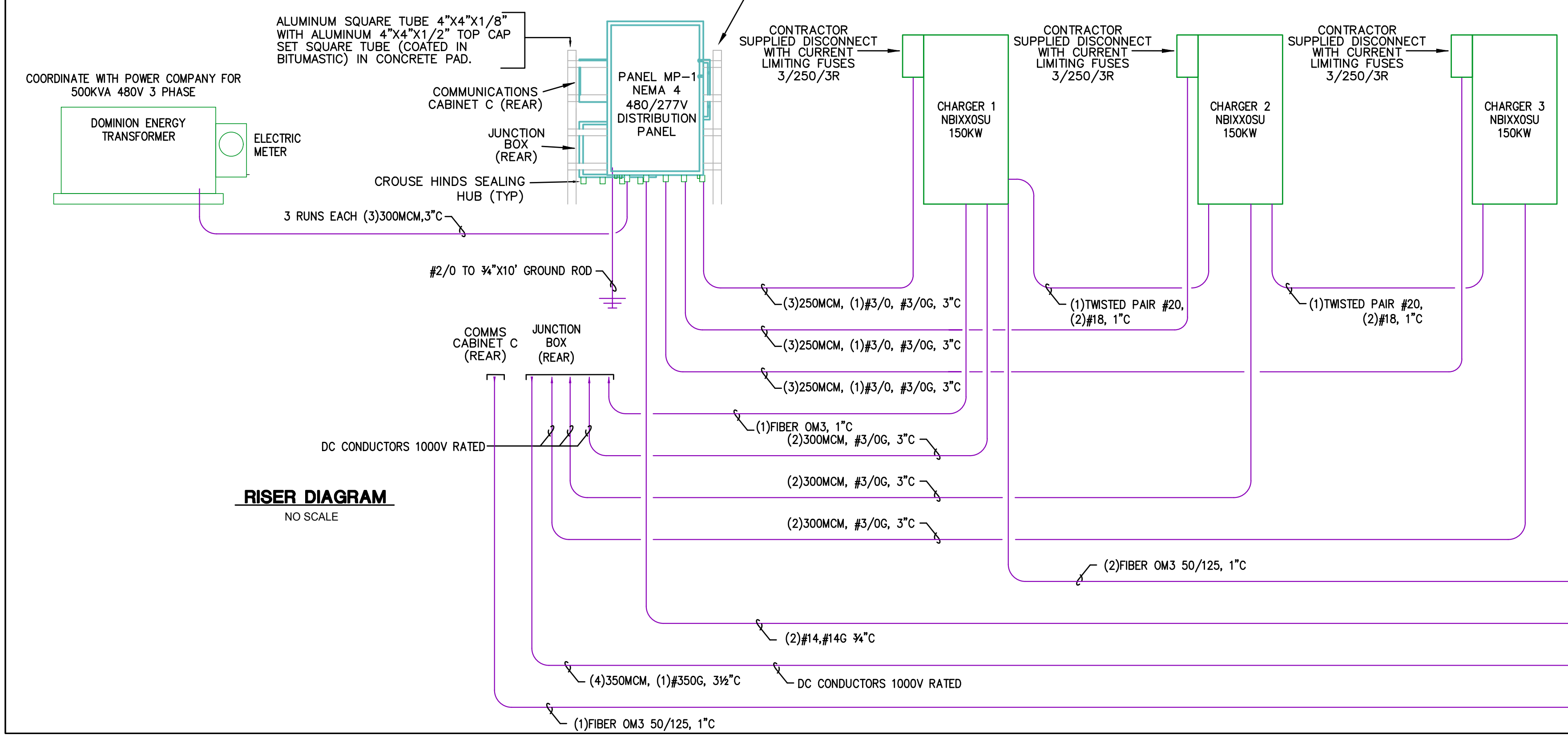
1. WIRING AND CONDUIT BETWEEN THE CONTROL BOX AND THE PANTOGRAPH ARE SHIPPED PRE-INTEGRATED BY THE MANUFACTURER. WIFI AND RFID ANTENNA ARE PRE MOUNTED BUTAN RFID ANTENNA ARE FIELD MOUNTED BUT WILL BE PRE-WIRED
2. INSTALLATION AND WIRING OF ALL CHARGING EQUIPMENT SHALL COMPLY WITH THE MANUFACTURER'S RECOMMENDATION. ANY CONFLICTS OR DISCREPANCY FOUND IN THE DOCUMENTS SHALL BE BROUGHT TO THE ATTENTION OF THE ENGINEER OF RECORD AND PROTERRA.
3. CHARGERS SHALL BE MOUNTED ON A 4" CONCRETE PAD AND SECURED PER MANUFACTURERS RECOMMENDATION



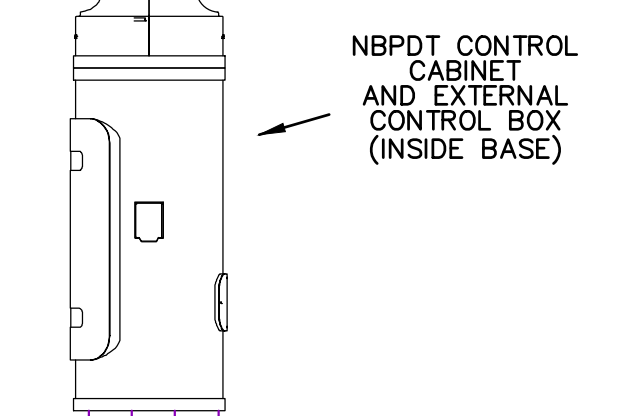
PANEL RACK REAR
 NO SCALE



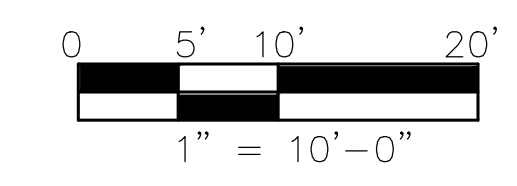
PANTOGRAPH



RISER DIAGRAM
 NO SCALE



NBPTD CONTROL CABINET AND EXTERNAL CONTROL BOX (INSIDE BASE)



CE Project No. 2365

Notes

Revision	By	Appd.	YY.MM.DD
2 PERMIT	JDD	JDD	23.07.20
1 PERMIT REVIEW	DJD	DJD	23.06.20
Issued	By	Appd.	YY.MM.DD

File Name:	Dwn.	Chkd.	Dsgn.	YY.MM.DD
Permit-Seal				



Client/Project
 MEDCOM STREET BUS STOP 42
 RELOCATION
 NORTH CHARLESTON, SC

ELECTRICAL SITE PLAN

Project No.	Scale	
215617098	AS NOTED	
Drawing No.	Sheet	Revision



Notes

Revision	By	Appd.	YY.MM.DD
2	PERMIT	JDD	23.07.20
1	PERMIT REVIEW	DJD	23.06.29
Issued			
	By	Appd.	YY.MM.DD

File Name: _____
Dem. Chkd. Dsgn. YY.MM.DD

Permit-Seal



Client/Project
MEDCOM STREET BUS STOP 42
RELOCATION
NORTH CHARLESTON, SC

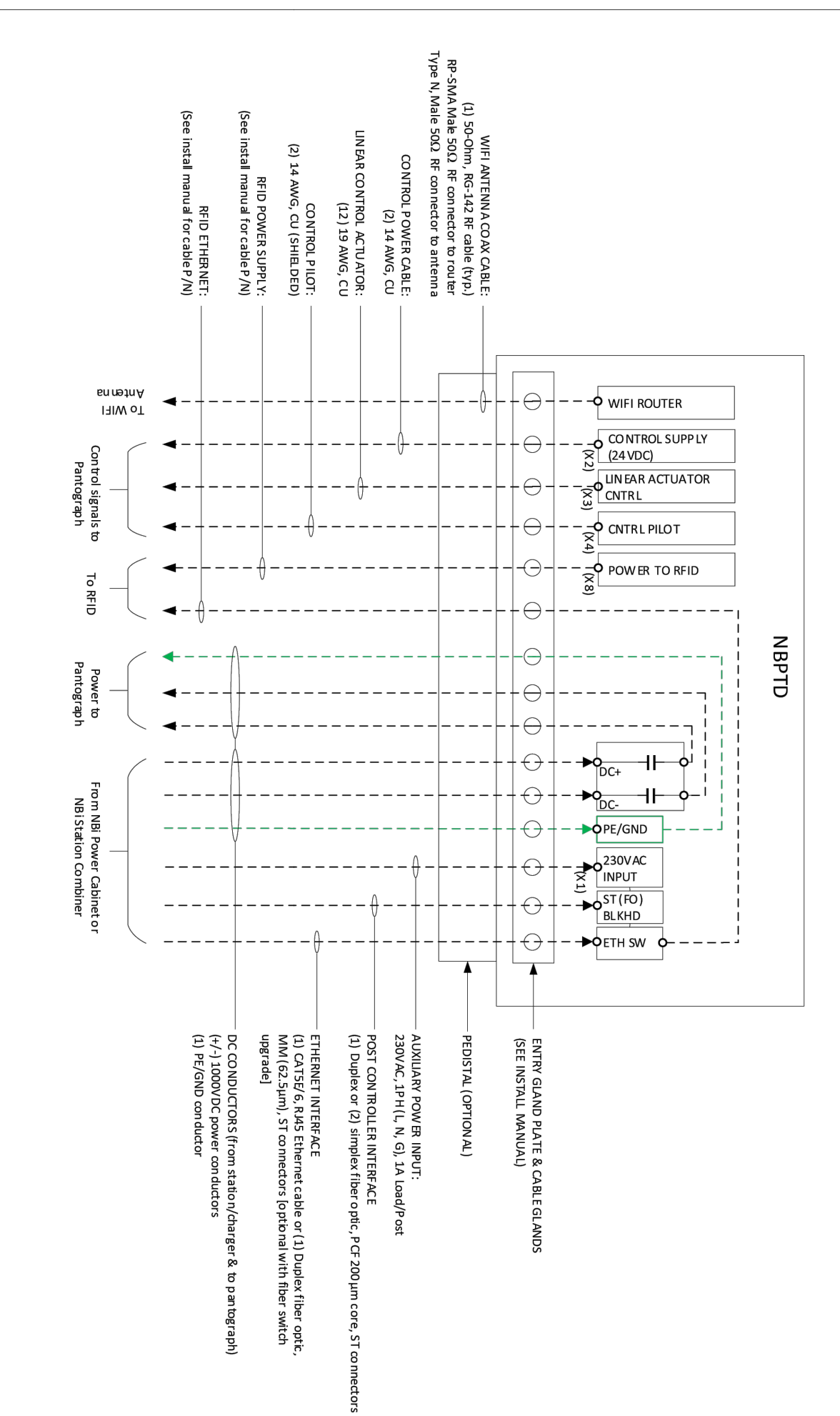
Title
OEM SCHEMATICS

Project No. 215617098 Scale AS NOTED
Drawing No. _____ Sheet _____ Revision _____

E302

REV.	DESCRIPTION	DATE	BY
1	Initial drawing	2/17/2021	SC

PANTOGRAPH CABINET WIRING DIAGRAM



LEGEND:
--- CONDUCTORS & COMMUNICATIONS PROVIDED BY CUSTOMERS

NOTES:
1. SEE INSTALLATION MANUAL FOR FURTHER DETAILS AND DESCRIPTIONS.
2. THE MAXIMUM DISTANCE FROM POWER CABINET TO INDUSTRIAL POSTS IS 150 METERS (80 METERS IF COPPER CABLE IS USED FOR POST TERMINATIONS).
3. ALL CABLING AND TERMINATIONS FROM POWER CABINET/STATION AND TO PANTOGRAPH ARE SUPPLIED BY THE CUSTOMER. CUSTOMER IS RESPONSIBLE FOR COMPLYING WITH LOCAL ELECTRICAL CODES AND STANDARDS FOR CABLE SIZING AND INSTALLATION.
4. SEE INSTALLATION MANUAL FOR TORQUE VALUES.
5. SEE PRODUCT SPECIFICATION SHEET FOR ADDITIONAL TECHNICAL CHARACTERISTICS.

PROPRIETARY & CONFIDENTIAL INFORMATION

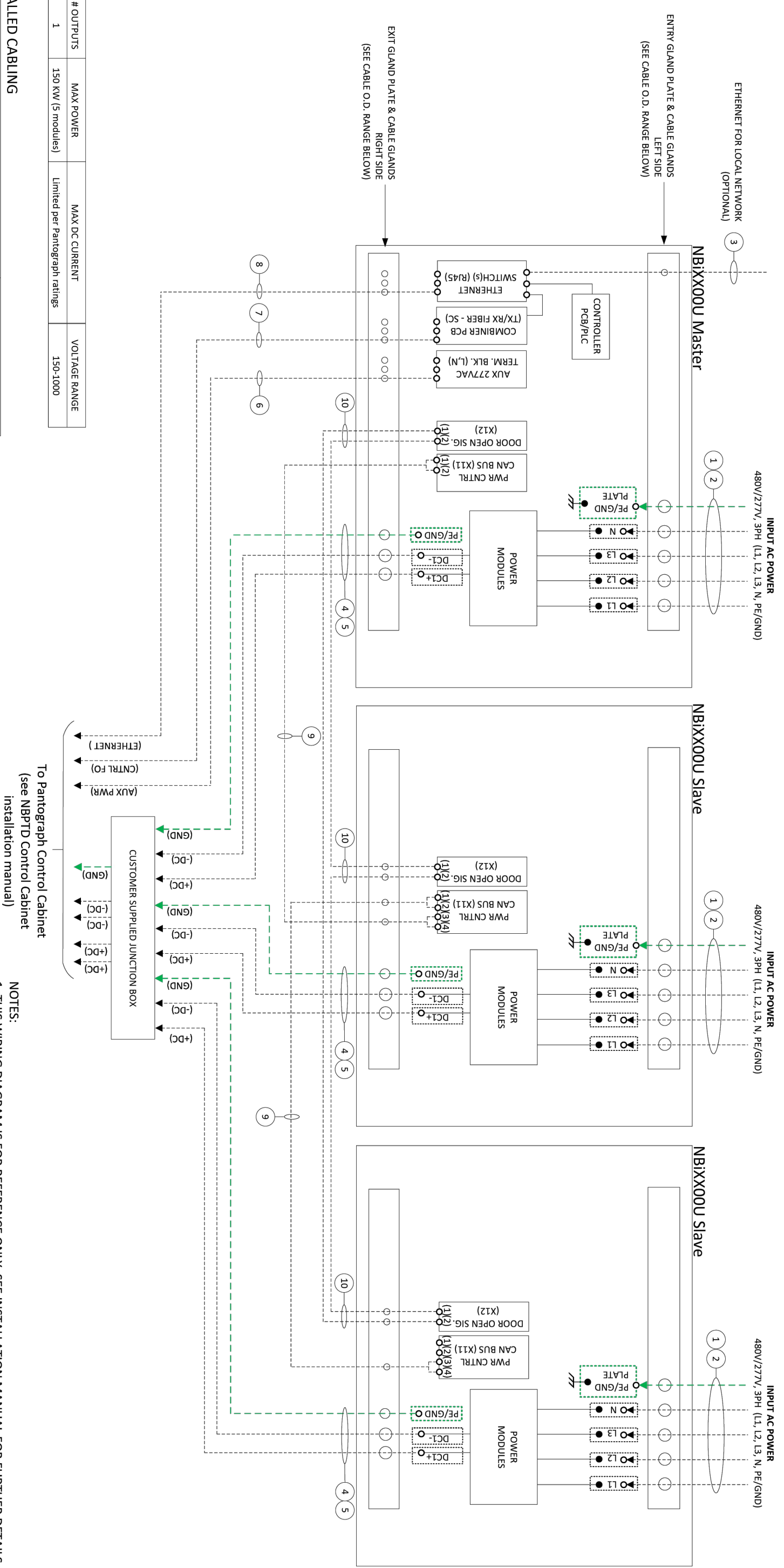


Title:
EQUIPMENT WIRING DIAGRAM
TOP-DOWN PANTOGRAPH CABINET - UL

Author: S. CASTAGNO
Revision: REV 1
Date: 2/17/2021

Power Electronics U.S.A.
2510 W. Highway 31
Gilbert, AZ 85233
(602) 354-4890

REV.	DESCRIPTION	DATE	BY
0.1	Preliminary drawing	8/5/2022	SC
0.2	Update open-door signal & CAN Bus wiring detail	10/17/2022	SC



#	CABLE DESCRIPTION	MAX. CONDUCTOR SIZE
1	INPUT AC POWER CABLES, 480V/277V/240V, 1L, 1L, 1L, 3	120 mm² (F300mm²)
2	INPUT AC GROUND AND NEUTRAL**	95 mm² (F300mm²)
3	ETHERNET CABLE CATEGORIES: CAT5E, CAT6	N/A
4	ETHERNET CABLE CATEGORIES: CAT5E, CAT6	N/A
5	ETHERNET CABLE CATEGORIES: CAT5E, CAT6	N/A
6	ETHERNET CABLE CATEGORIES: CAT5E, CAT6	N/A
7	ETHERNET CABLE CATEGORIES: CAT5E, CAT6	N/A
8	ETHERNET CABLE CATEGORIES: CAT5E, CAT6	N/A
9	ETHERNET CABLE CATEGORIES: CAT5E, CAT6	N/A
10	ETHERNET CABLE CATEGORIES: CAT5E, CAT6	N/A

LEGEND:
--- CONDUCTORS & COMMUNICATIONS PROVIDED BY CUSTOMERS
--- EQUIPMENT GROUND CONDUCTORS PROVIDED BY CUSTOMERS
--- INTERNAL WIRING PROVIDED BY POWER ELECTRONICS
--- BUS BAR/PLATE TERMINATION

NOTES:
1. THIS WIRING DIAGRAM IS FOR REFERENCE ONLY. SEE INSTALLATION MANUAL FOR FURTHER DETAILS.
2. MAXIMUM DISTANCE FROM POWER CABINET TO INDUSTRIAL PANTOGRAPH CABINET IS 150 METERS (80 METERS IF COPPER CABLE IS USED FOR POST TERMINATIONS, DC OUTPUT TERMINATIONS).
3. AC INPUT TERMINATIONS, DC OUTPUT TERMINATIONS, AND GROUND TERMINATIONS ACCOMMODATE 2-HOLE LUGS, 0.5 INCH STUD, 1.75 INCH SPACING AND TERMINATIONS SUPPLIED BY THE CUSTOMER. CUSTOMER IS RESPONSIBLE FOR COMPLYING WITH LOCAL ELECTRICAL CODES AND STANDARDS FOR CABLE SIZING AND INSTALLATION.
4. ALL CABLING AND TERMINATIONS FROM POWER CABINET/STATION AND TO PANTOGRAPH ARE SUPPLIED BY THE CUSTOMER. CUSTOMER IS RESPONSIBLE FOR COMPLYING WITH LOCAL ELECTRICAL CODES AND STANDARDS FOR CABLE SIZING AND INSTALLATION.
5. SEE PRODUCT SPECIFICATION SHEET FOR ADDITIONAL TECHNICAL CHARACTERISTICS.
6. SEE PRODUCT SPECIFICATION SHEET FOR ADDITIONAL TECHNICAL CHARACTERISTICS.
7. WIRING APPLIES TO PANTOGRAPH CABINET SYSTEMS - EXTERNAL RECOMBINER BOX FOR DC POWER CABLES REQUIRED.
8. FUSED CHANGING POWER LIMIT SETTINGS TO BE APPLIED BY POWER ELECTRONICS BASED ON PROJECT REQUIREMENTS.

PROPRIETARY & CONFIDENTIAL INFORMATION



Title:
EQUIPMENT WIRING DIAGRAM
PARALLEL 3X NB150DU Power Cabinets, 1000VDC,
1x 450KW to Top-Down Pantograph Cabinet

Author: S. CASTAGNO
Revision: Rev 0.2
Date: 10/17/2022

Power Electronics U.S.A.
1510 W. Highway 31
Gilbert, AZ 85233
(602) 354-4890