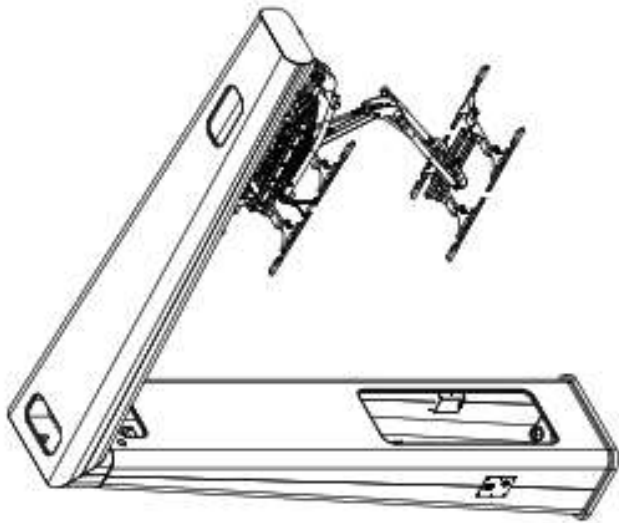
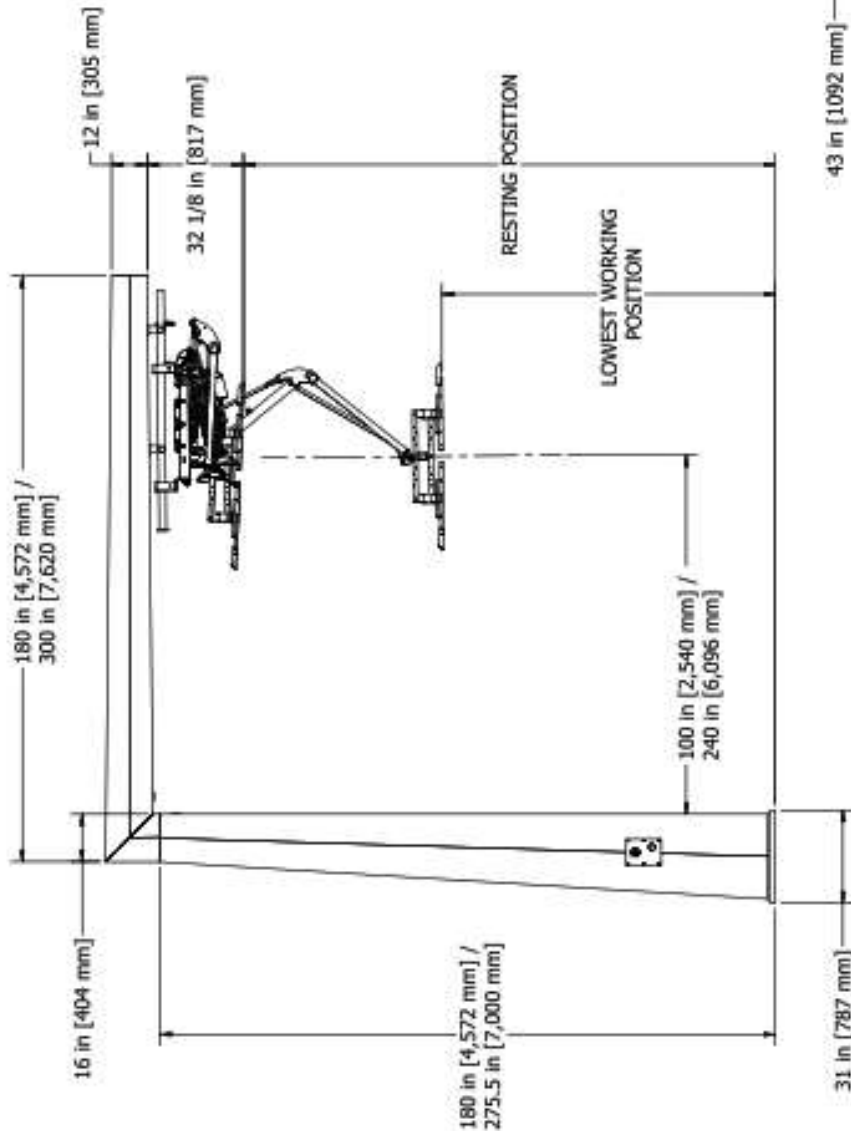


(4) Integrated units fit on a standard height flatbed trailer



71" x 24.5" [1,803 mm]
OPENING

APPROXIMATE WEIGHTS:

17' [5,182 mm] POLE 3,600 lbs [1,633 kg]

16' 3" [4,980 mm] ARM 2,600 lbs [1,180 kg]

408

VALMONT INDUSTRIES, INC. RESERVES
THE RIGHT TO MAKE ANY
CHANGES WITHOUT NOTICE.
FOR MORE INFORMATION, CONTACT THE
MANUFACTURING DEPARTMENT.

11715-BUS CHARGING POLE DIMENSIONAL RANGE



VALMONT INDUSTRIES
POLE ELEMENT
PART NUMBER
11715-B01A (2)



Placing Structure on anchor Bolts



Bottom View of Structure

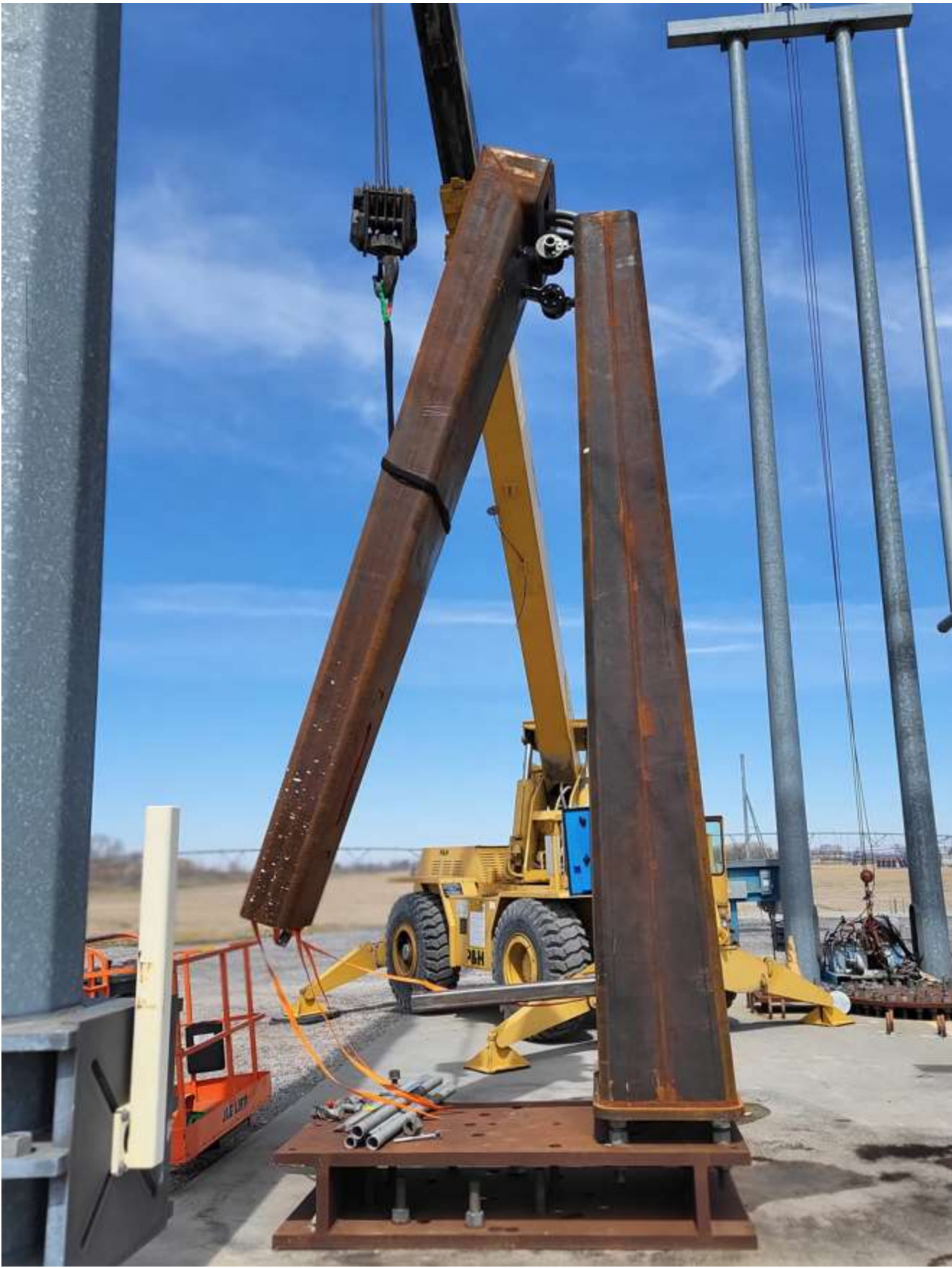


Installation of Anchor Nuts





Attachment of sling to arm



Pivoting Arm into position



View of 2" Conduit





Arm Pivoted to Horizontal Position



View looking upward at pole to arm connection hardware



View of Rear of Structure



Access at top of Arm



Viewing Looking Upward



View of electrical cabinet



Equipment access opening at Pole Base (6'3" Person)



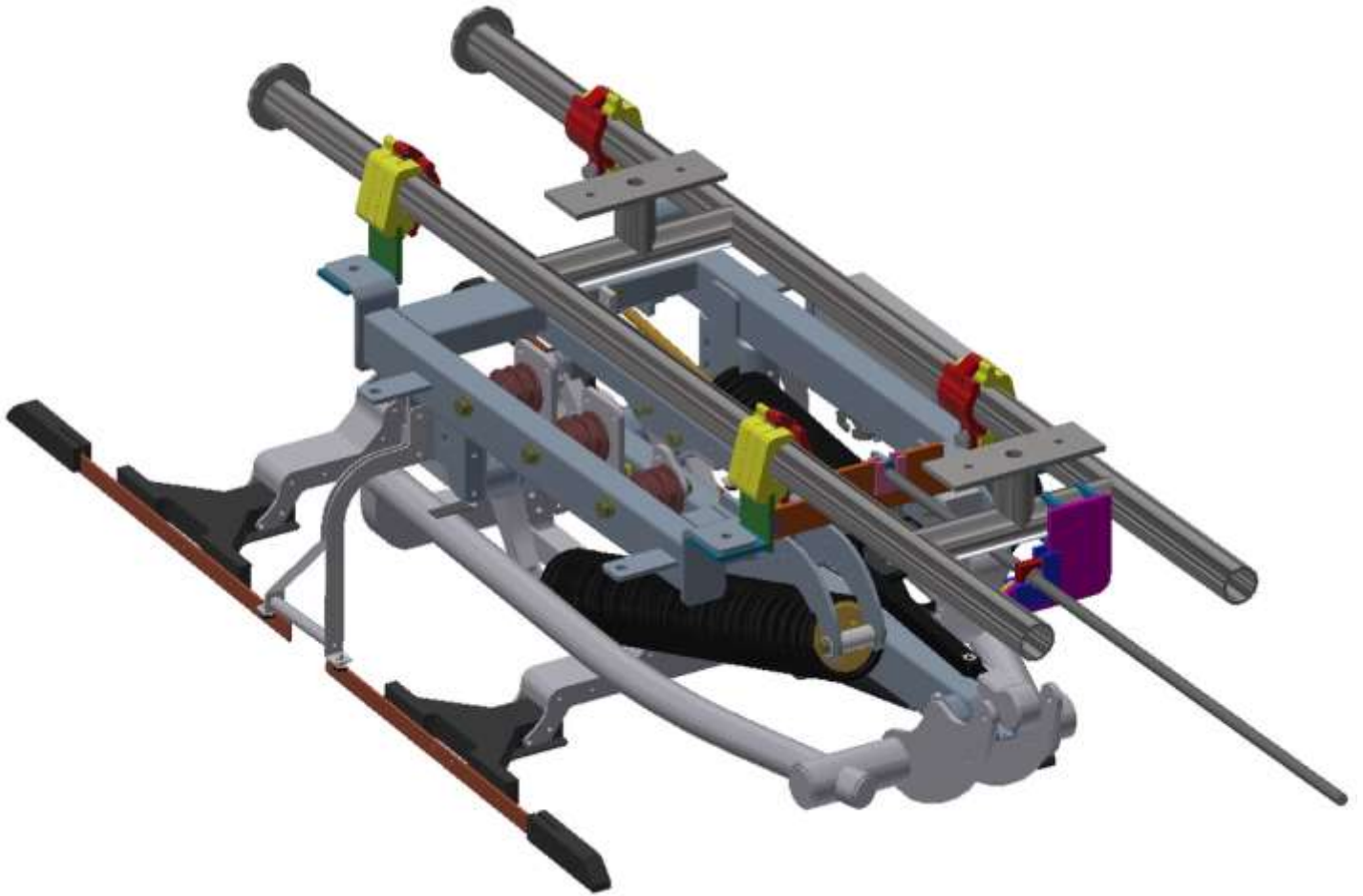
Removeable Hinge Assemblies



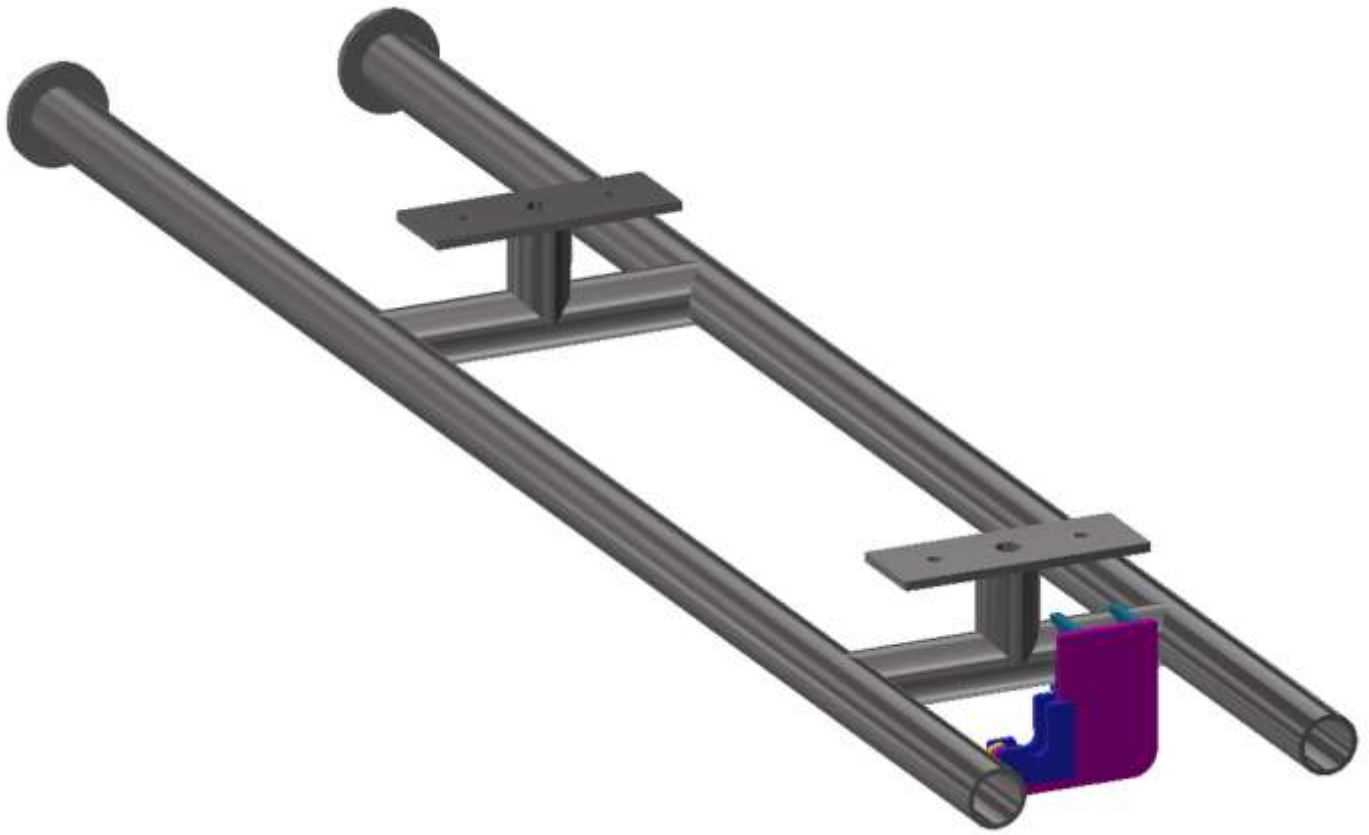
View of Hinge Yoke



Interior view of Hinge to Pole connection. (Similar connection to a receiver hitch on Pickup truck)



Pantograph on adjustable hanger assembly



Pantograph adapter / hanger assembly (threaded adjustment rod removed after final adjustment is completed)

