

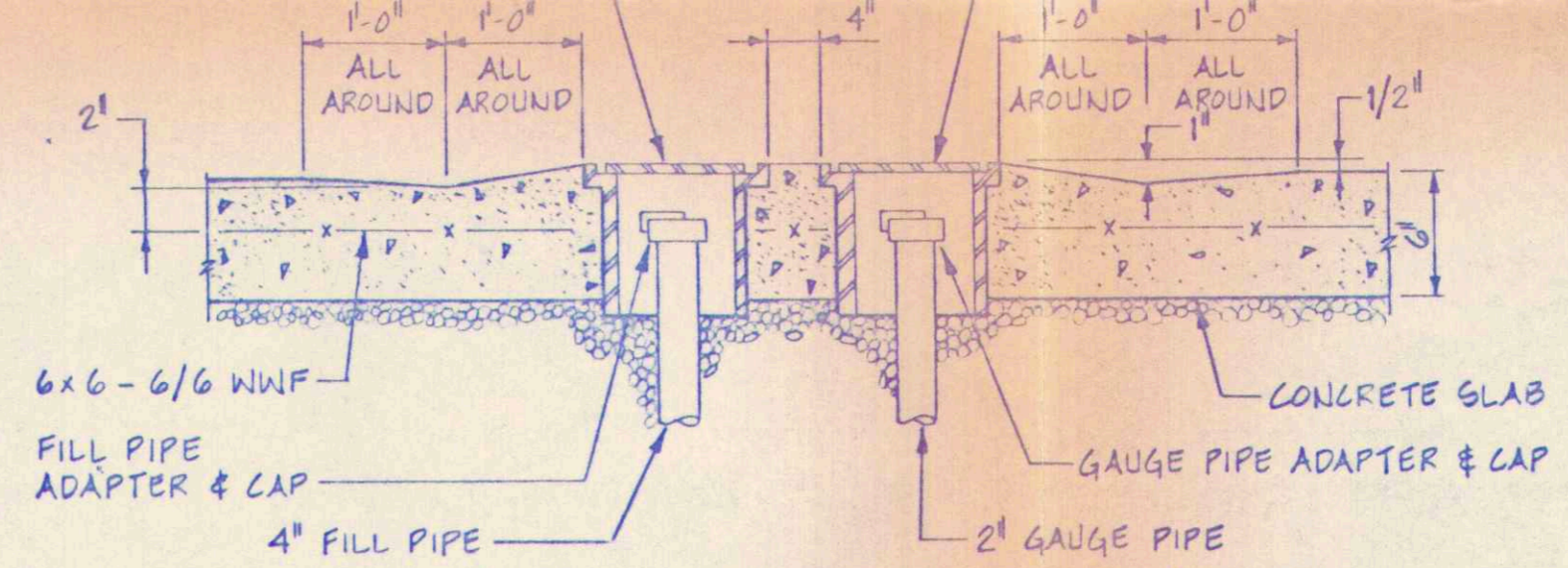
SIDE VIEW

END VIEW

1 GASOLINE & FUEL STORAGE TANK DETAIL (TYPICAL)

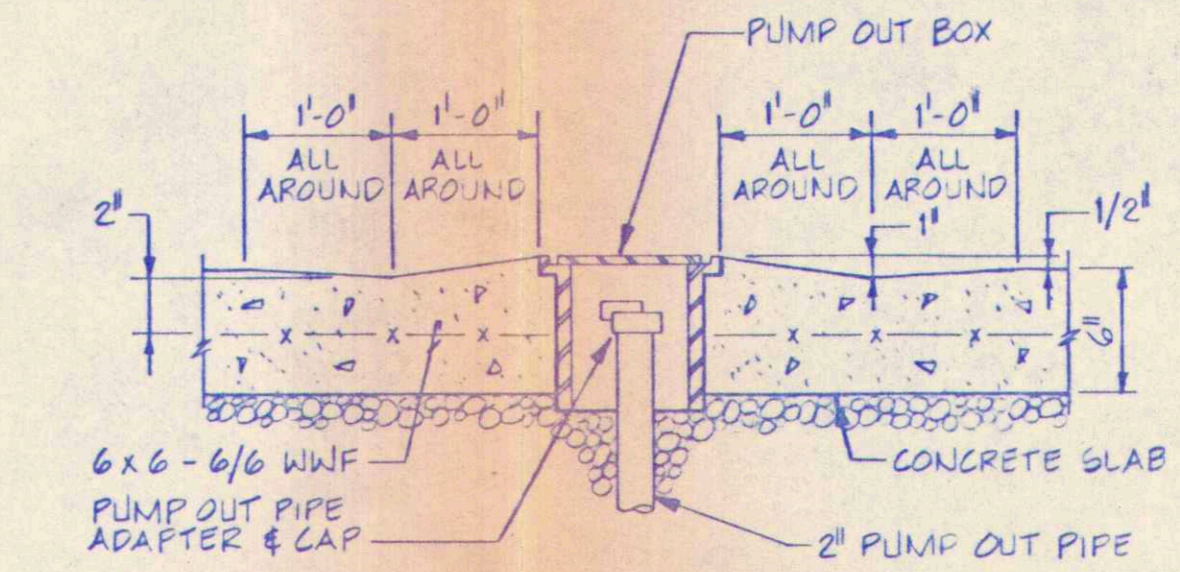
P-10 NO SCALE

TANKS TO BE SUPPLIED AS FOLLOWS:
 NO. 1 DIESEL FUEL - 20,000 GALLONS
 NO. 2 DIESEL FUEL - 10,000 GALLONS
 UNLEADED GASOLINE - 10,000 GALLONS



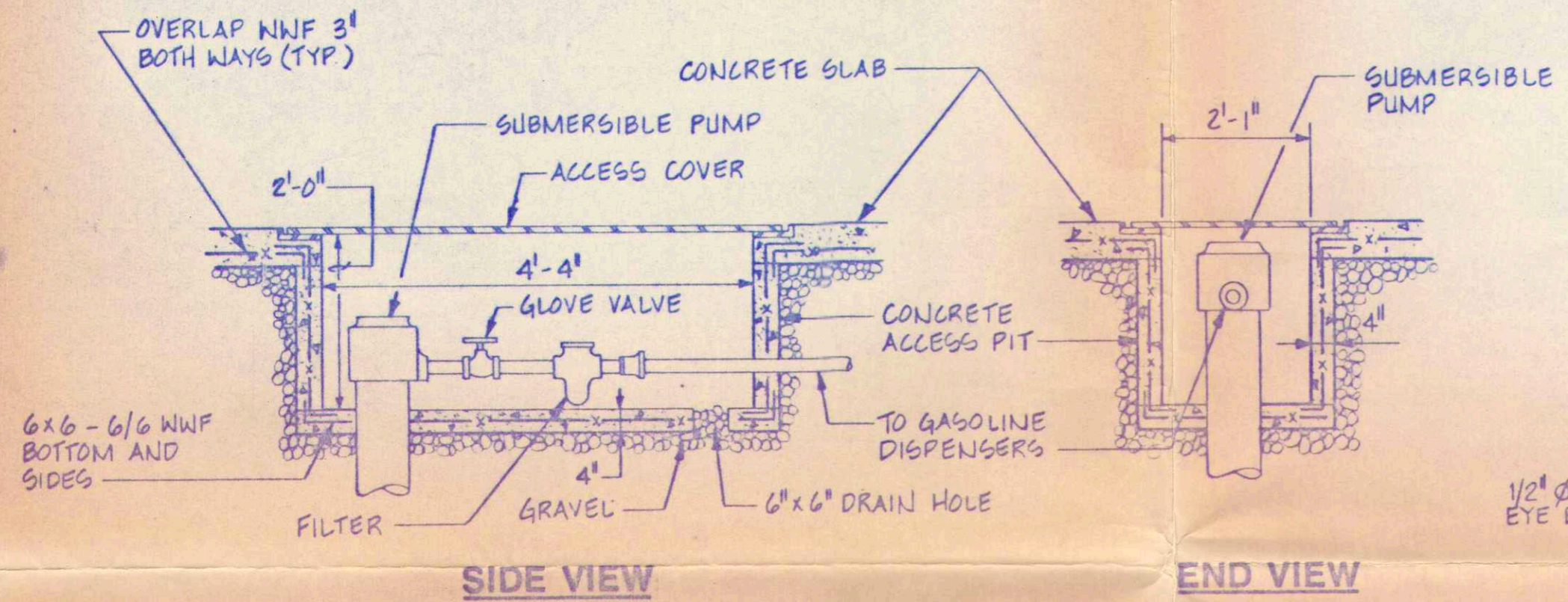
4 GASOLINE & FUEL FILL & GAUGE BOX DETAIL (TYPICAL)

P-10 NO SCALE



7 WASTE OIL PUMPOUT BOX DETAIL (TYPICAL)

P-10 NO SCALE

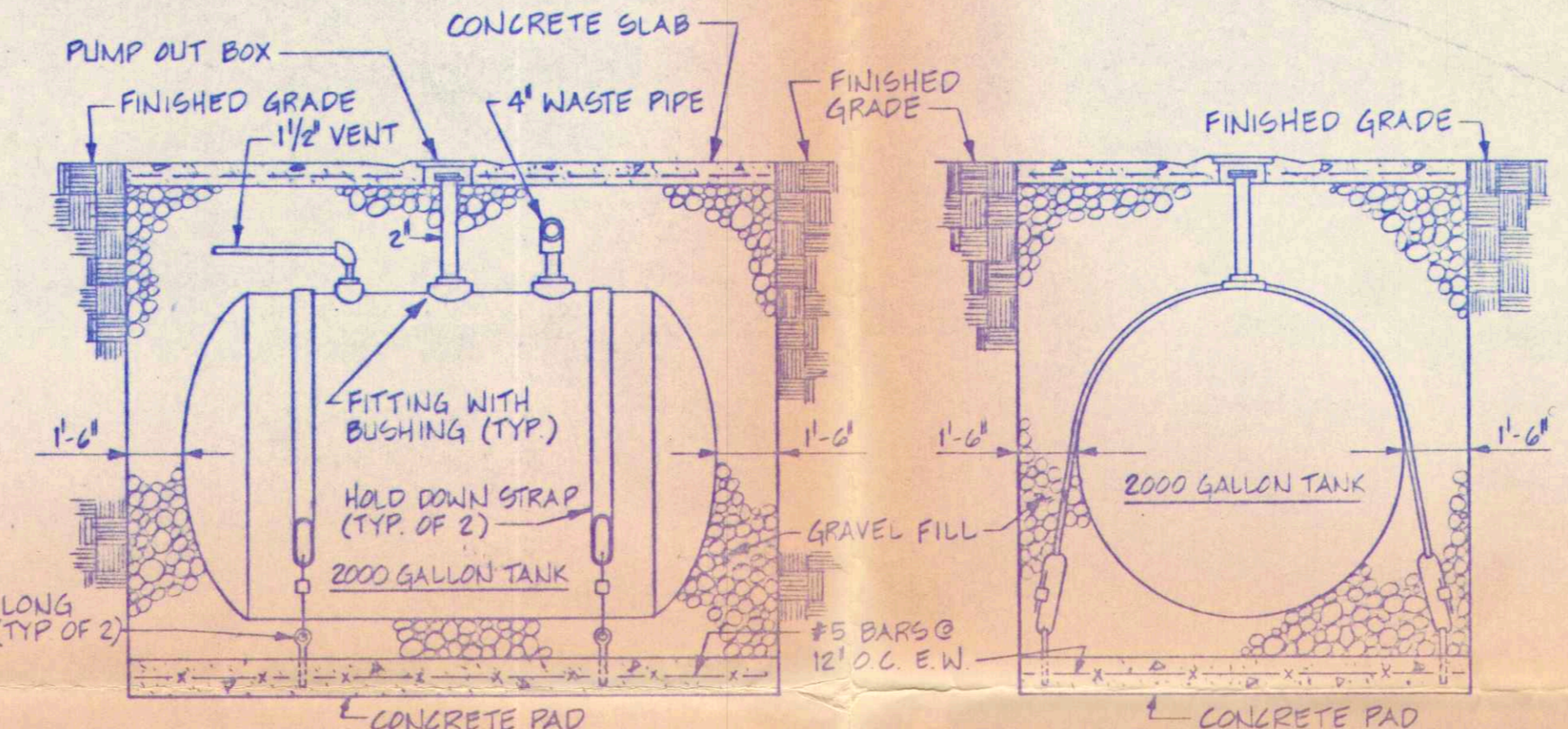


SIDE VIEW

END VIEW

2 GASOLINE & FUEL PUMP ACCESS PIT DETAIL (TYPICAL)

P-10 NO SCALE

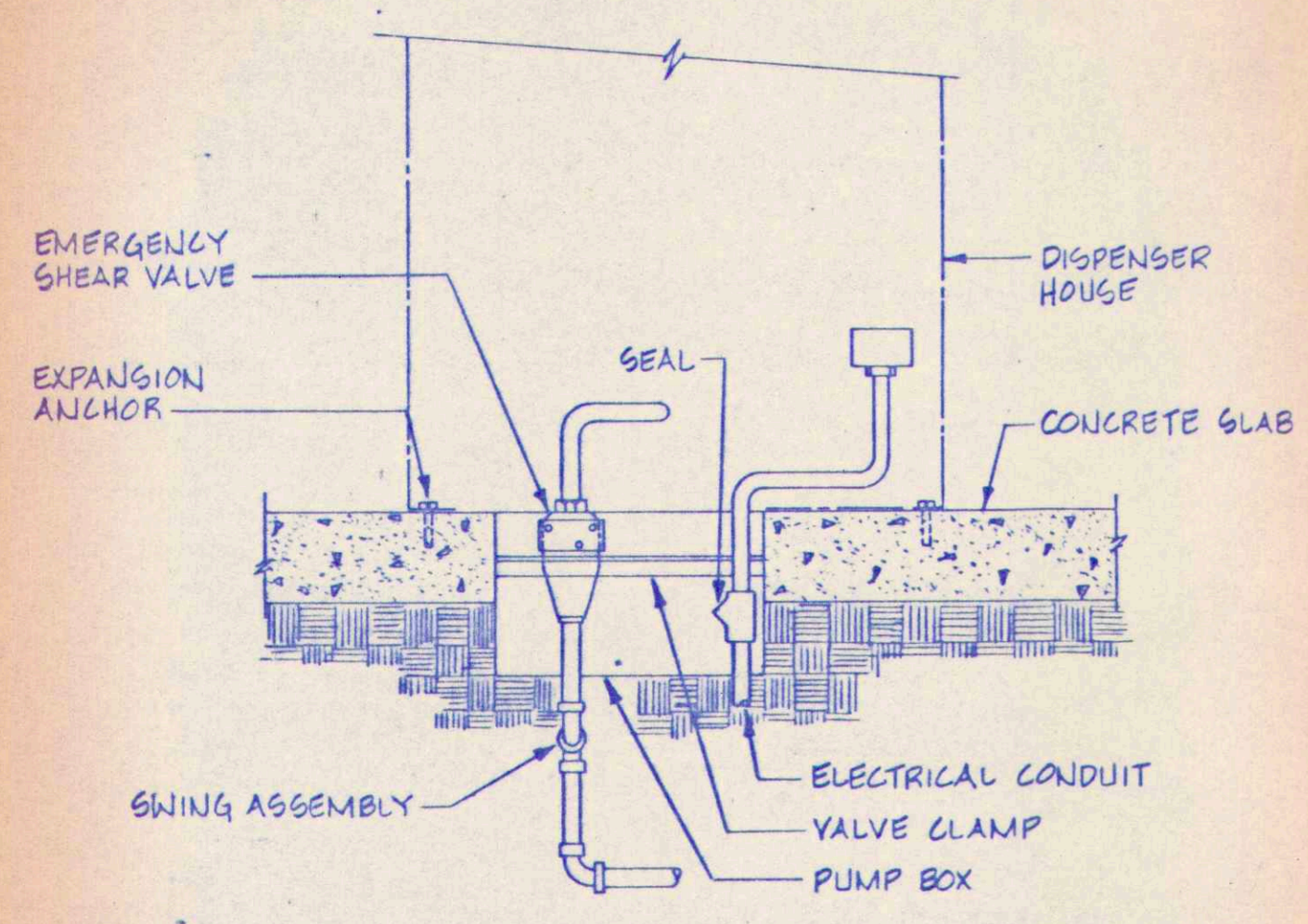


SIDE VIEW

END VIEW

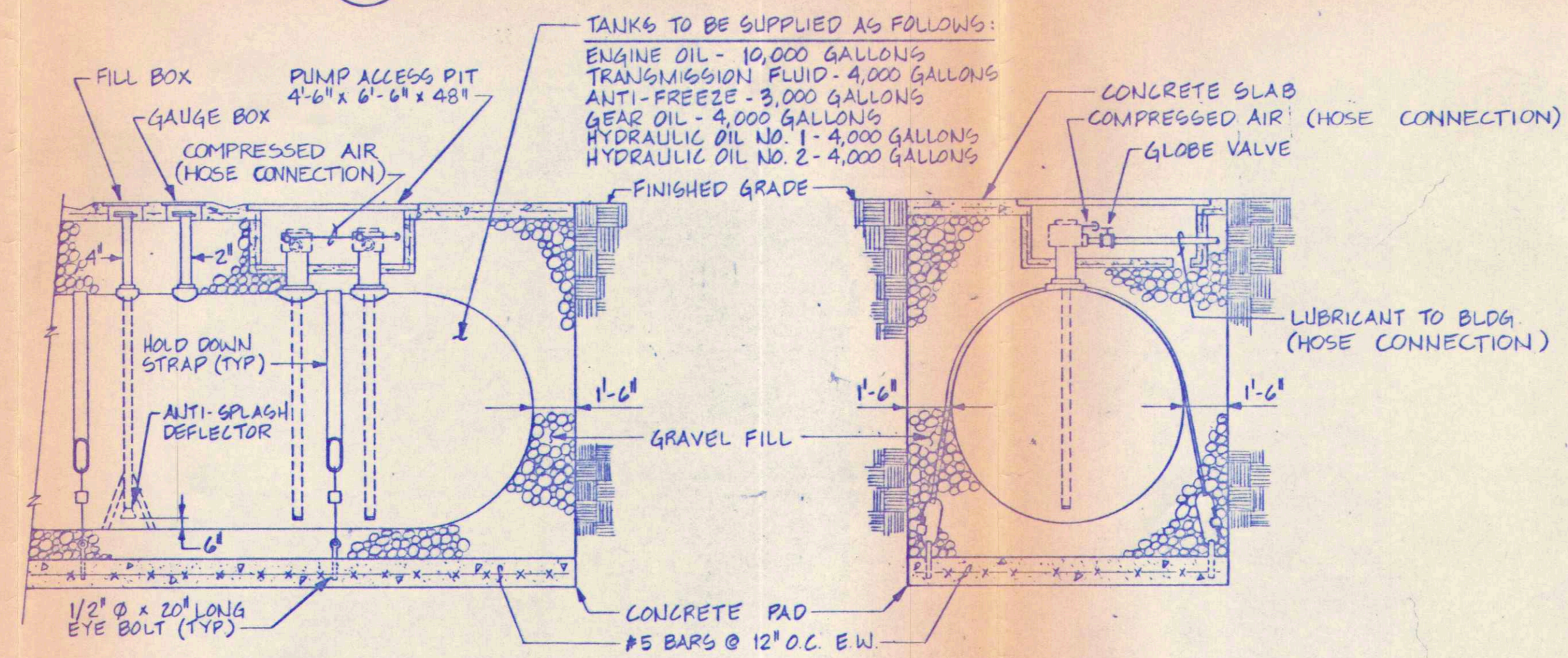
5 WASTE OIL STORAGE TANK DETAIL (TYPICAL)

P-10 NO SCALE



3 GASOLINE & FUEL DISPENSING UNIT CONNECTION DETAIL (TYPICAL)

P-10 NO SCALE



SIDE VIEW

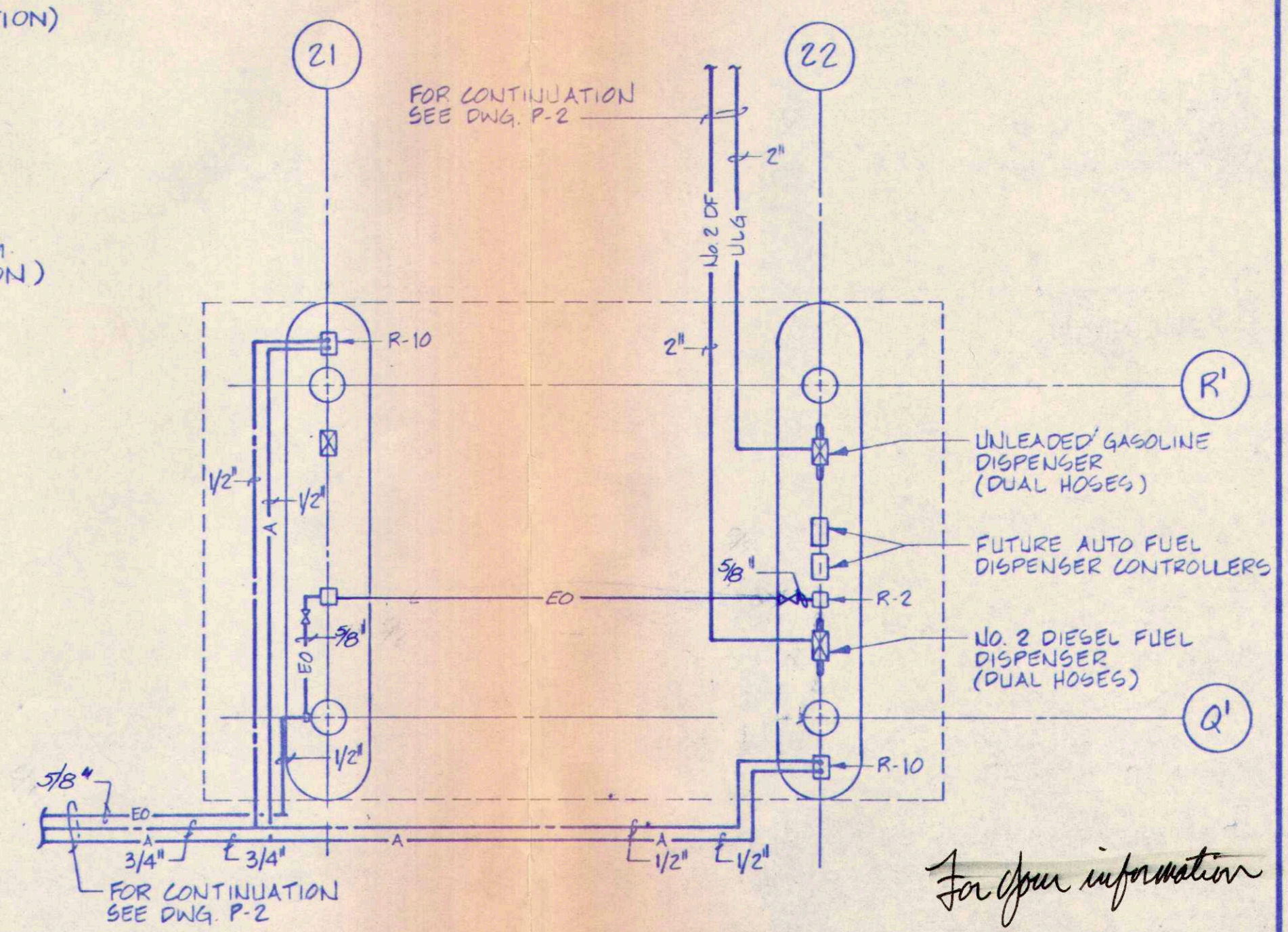
END VIEW

6 LUBRICANT STORAGE TANK DETAIL (TYPICAL)

P-10 NO SCALE

NOTE: TANKS TO BE INSTALLED AS PER DETAIL 1/P-10

TANKS TO BE SUPPLIED AS FOLLOWS:
 ENGINE OIL - 10,000 GALLONS
 TRANSMISSION FLUID - 4,000 GALLONS
 ANTI-FREEZE - 3,000 GALLONS
 GEAR OIL - 4,000 GALLONS
 HYDRAULIC OIL NO. 1 - 4,000 GALLONS
 HYDRAULIC OIL NO. 2 - 4,000 GALLONS



8 FUEL ISLAND PLAN - PLUMBING

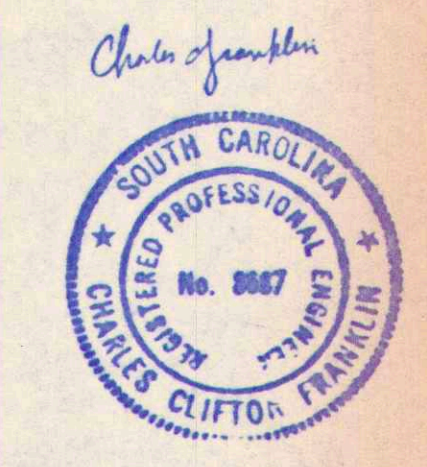
P-10 1/8" = 1'-0"

For your information

REGISTERED ARCHITECT
L M S
 LUCAS STUBBS PASCELLI POWELL & PENNEY LTD.
 ARCHITECTS PLANNERS INTERIOR DESIGNERS LANDSCAPE ARCHITECTS

Southern Division
 Transit and Fleet Maintenance Center

DATE: JUNE 25, 1985
 DRAWN: J. M. GARTENBERG
 CHECKED: S. MOLIVAZZI
 REVISIONS:



COMMISSION
8467.00

FUEL STORAGE DETAILS

0-216655

P-10

2816-047